

## [UnOfficial] How to Flash ATI Cards!

Thanks to savagebunny for supplying and compiling the text!!!

I take no responsibility of bricking your card while flashing, which is very unlikely in DOS but is possible. I only wrote this tutorial for learning purposes and you're taking your own risk with your card(s) \*\*Flashing your card from reference BIOS to Non-Reference has a risk of breaking your card\*\*

## Tools Needed:

[HP Format Tool](#)

[Latest ATi Flash](#)

[GPU-z](#)

USB Boot Files (Download them here)

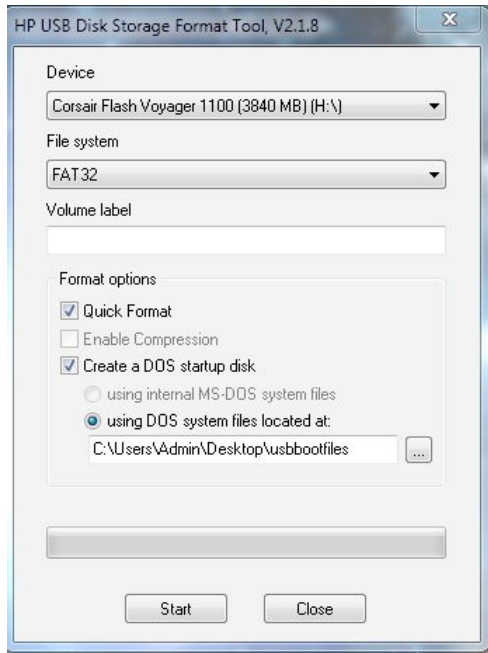
We will use HP Format Tool too format a USB drive to boot off and use ATi Flash to flash your card!

You can use GPU-z to verify the BIOS flash once you boot into windows.

## Directions:

extract the USB boot files folder to say your desktop for easy location.

Once you have extracted the boot files, load up HP Format Tool and do the following in this screenshot.



You can select Quick Format if you using a large size flash drive and you will want to find the usbbootfiles to format your USB drive off.

Once you have done that, extract the files from the downloaded atiflash.zip to your flash drive.

Now you are ready to locate some new BIOS.

To get new BIOS for your video card, you can go to Techpowerup and get BIOS for your ATI card. Or you can get and use one of the bios files in the zip file Attached too the blogpost where you got this pdf **\*NOTE: Please verify you download or are using the correct BIOS\***

[Techpowerup ATI BIOS](#)

or

<http://www.klikken.com/links/files-for-flashing-ati-4890.zip>

Now once you have downloaded the BIOS, drags the BIOS over too your USB drive. Now to make sure of some things, you have now extracted ATi flash onto the USB drive and the new BIOS you are going to flash your card with.

It's now time too boot up your flash drive, restart your computer and boot your flash drive, If you have booted up off the USB drive successfully, you will now see Windows 98 DOS on your screen.

## Flashing Time!

To flash your video card, We gotta go through some steps. We gotta get your video card device number; in order to do that please type this command: **atiflash.exe -i**

Now your device ID should show like on my screen

```

Microsoft(R) Windows 98
(C)Copyright Microsoft Corp 1981-1999.

C:\>atiflash.exe -i

adapter bn dn dID          asic          flas
===== == == =====
      0   01 00 68B8 Juniper          PM25LV01

C:\>

```

The Device Number is 0 as shown on my computer.

**BACKUP YOUR BIOS!** \*Note: If you want too skip this, you can also backup your BIOS with GPU-z\*

I can't stress this enough, although you can probably get your old BIOS back from Techpowerup, you always want your BIOS backup-ed. In order to do this type this command **atiflash.exe -s 0 backup.bin**

If it worked correctly, it should show up similar like this on my computer

```

adapter bn dn dID          asic          f l
===== == == =====
      0   01 00 68B8 Juniper          PM25LV

C:\>atiflash.exe -s 0 backup.bin
0x20000 bytes saved, checksum = 0x3459

C:\>_

```

Here are some descriptions of commands that we already used and will use.

**atiflash.exe -i** - This will get your device ID(s) for your card(s).

**atiflash.exe -s backup.bin** - This will make a backup of your OLD BIOS just encase the new BIOS doesn't work correctly.

**atiflash.exe -f -p 0 newbios.bin** - This command will be flashing your card.

-----

Time to flash your card. Now that you have a backup of your BIOS. type this command to flash your card

**atiflash.exe -f -p 0 newbios.bin**

\*Note: When I wrote this, I didn't re-flash my card because I didn't wanna re-install my drivers\*

Once you have done that, it should display a message that the flash is successful. You now should load back into Windows and you gotta reinstall your drivers. Now you have successfully installed a new BIOS on your ATi card. If you have any questions feel free to post here and I'll try and get back. I try to keep a social life outside of OCN